

Related Design Services:

- Consulting
- Database Development
- Application Design & Development
- Surveying & Mapping
- Systems Integration
- Asset Management
- Data Access & Visualization
- Staffing Support
- NG911 GIS Services



For additional information,
contact: Steve Bein
(949) 855-3642
sbein@mbakerintl.com

Geospatial Information Technology (GIT)

Michael Baker International is a diversified Consulting and Engineering firm, with more than 6,000 employees worldwide and more than 75 years of experience in the mapping sciences. Michael Baker provides innovative Geospatial Information Technology (GIT) solutions using our Mapping to Manage™ approach. This provides a breadth of services from strategic planning to tactical implementation, helping to meet your geospatial business needs.

Michael Baker International's GIT organization is a powerhouse of experience and resources to support all elements of your project from needs analysis, digitizing/data conversion with associated attributes, creating customized mapping applications, and providing the appropriate documentation, implementation, and training. Michael Baker International is a recognized leader in implementing complex enterprise GIS solutions for a wide variety of public and private sector clients. We are committed to advancing our competitive technological edge and delivering best-in-class solutions. Our satisfied customers trust Michael Baker International to fulfill their most challenging requirements.

Michael Baker International's Quality Commitment. Michael Baker International offices are committed to completing projects that meet our clients' requirements with respect to scope, schedule, budget and technical quality. Several of Michael Baker's GIT offices employ an ISO9001:2008 certified management system for the design and provision of Professional Engineering and Consulting services with a focus on Geospatial Information Technologies.



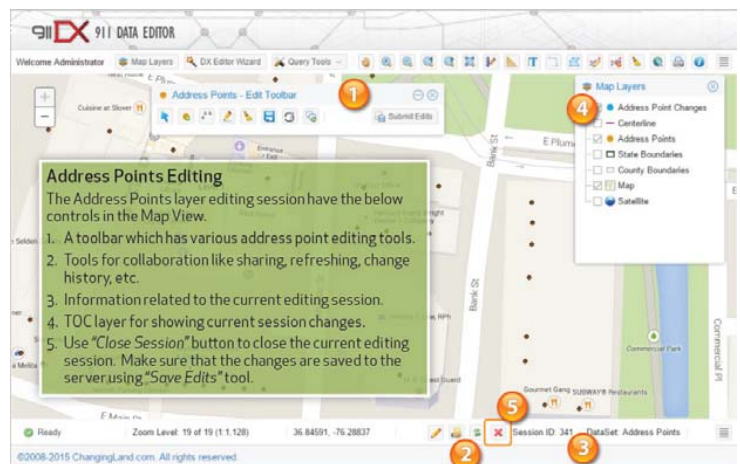
DM Data Analysis,
Planning &
Consulting



DM Products



DM Technical
Services



Services Provided

- Consulting
- Database Development
- Application Design & Development
- Data Acquisition & Processing
- Mobile LiDAR
- Pvmnt Mgt & Laser Crack Detection
- Ground Penetrating Radar
- Surveying & Mapping
- Systems Integration
- Asset Management
- Data Access & Visualization
- Staffing Support

Solution Advantages:

- 40% savings in survey costs
- Reduce survey time by 30%
- No lane / tunnel closures (no impact to traffic)
- Collect day or night
- Minimal safety risks
- Complete integration with existing Surveys
- Calibrated Images (easy scene comprehension)
- Full survey of all natural and as-built features



Mobile LiDAR Technology

Michael Baker's mobile Light Detection and Ranging (LiDAR) system provides a more efficient survey solution over traditional methods for cataloging information on our Nation's critical infrastructure, and to resolutions and detail unachievable by aerial LiDAR or photogrammetry. From a single survey session, Michael Baker's Mobile LiDAR system facilitates rapid and accurate collection of digital data for easy identification of natural and as-built features for design and planning.

Public Safety/Emergency Management

Rapidly identify areas prone to flooding, model inundation and perform financial analysis of impact by integration with tax assessment information. Provide rapid 3D visualizations for situational awareness, disaster response and evacuation planning.

Enterprise Solution Approach

Comprehensive topographic data collection for development of enterprise Geographic Information System where collaboration between departments fosters pooling of financial, technical and intellectual resources. Efficiently contract for multiple applications through a single procurement process saving considerable time and effort.

Asset Inventory/Utilities

High resolution collection provides framework for identifying and locating fixed assets including electric distribution systems, potable water and wastewater infrastructure and storm water systems. Easily integrate existing Work Order Infrastructure Management Systems for a complete picture and added value.

