

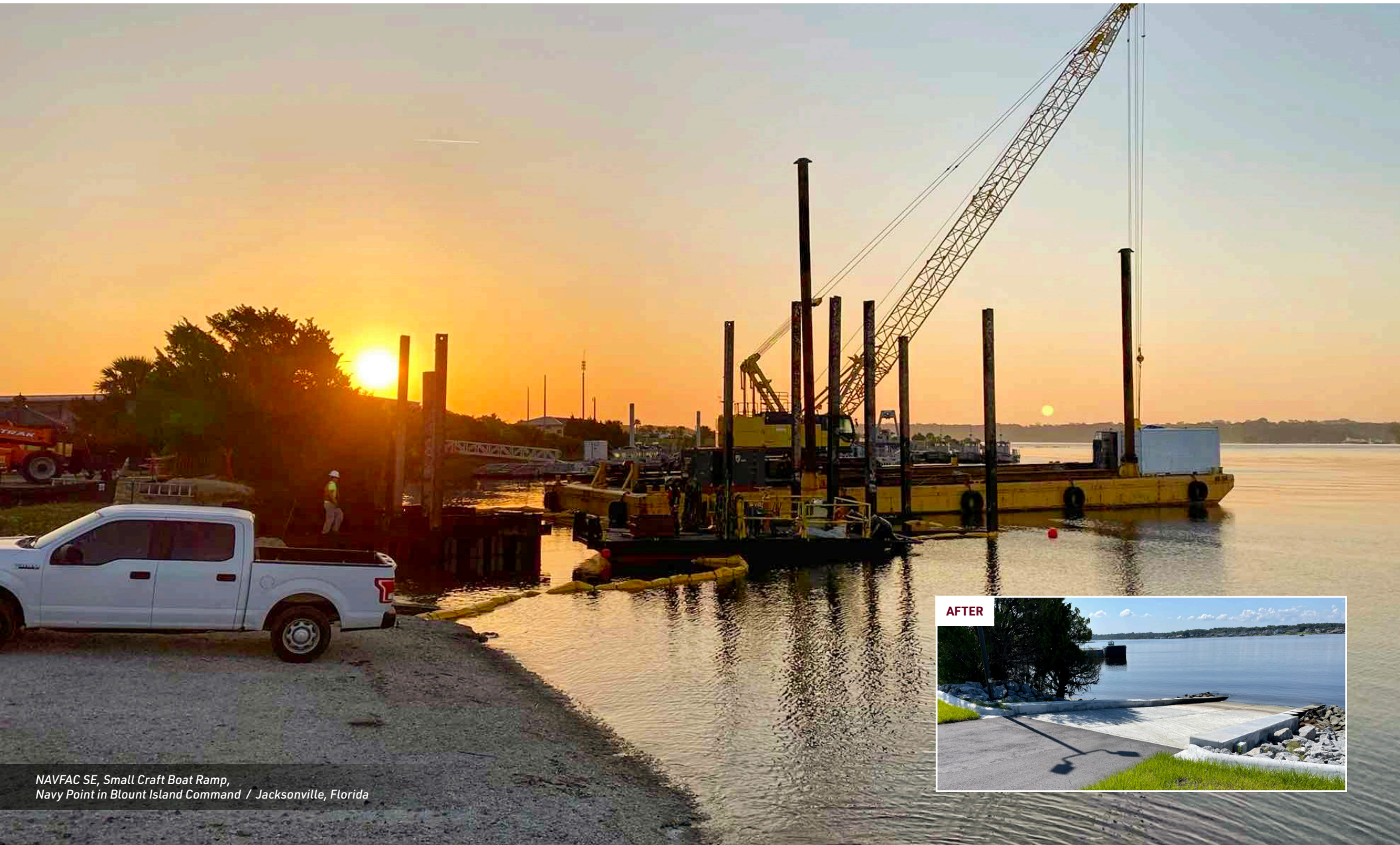
ARCHITECTURE & ENGINEERING JOINT VENTURE

Your small business offering large business capabilities

GMHILL

Michael Baker
INTERNATIONAL

JOINT VENTURE



NAVFAC SE, Small Craft Boat Ramp,
Navy Point in Blount Island Command / Jacksonville, Florida

PROVEN MENTOR PROTÉGÉ PARTNERSHIP

GMHILL BAKER JV, LLC – the SBA-approved Mentor Protégé Joint Venture (JV) of G.M. Hill Engineering (GMHILL) and Michael Baker International combines the forces of two established consulting firms into a cohesive team that provides diverse architecture and engineering (AE) professional services.

Together, we bring new approaches, unique skill sets and an eagerness to help our clients meet their most challenging demands. With every project, we assemble the right combination of expertise, geographic presence, contract management systems and other resources to help our clients achieve their missions.

We pride ourselves on aligning with our clients' culture and dynamic environments to facilitate cohesive working relationships that result in well-coordinated design products. What's more, we have the ability, capacity and flexibility to complete multiple task orders simultaneously—even with accelerated schedules and tight budgets.

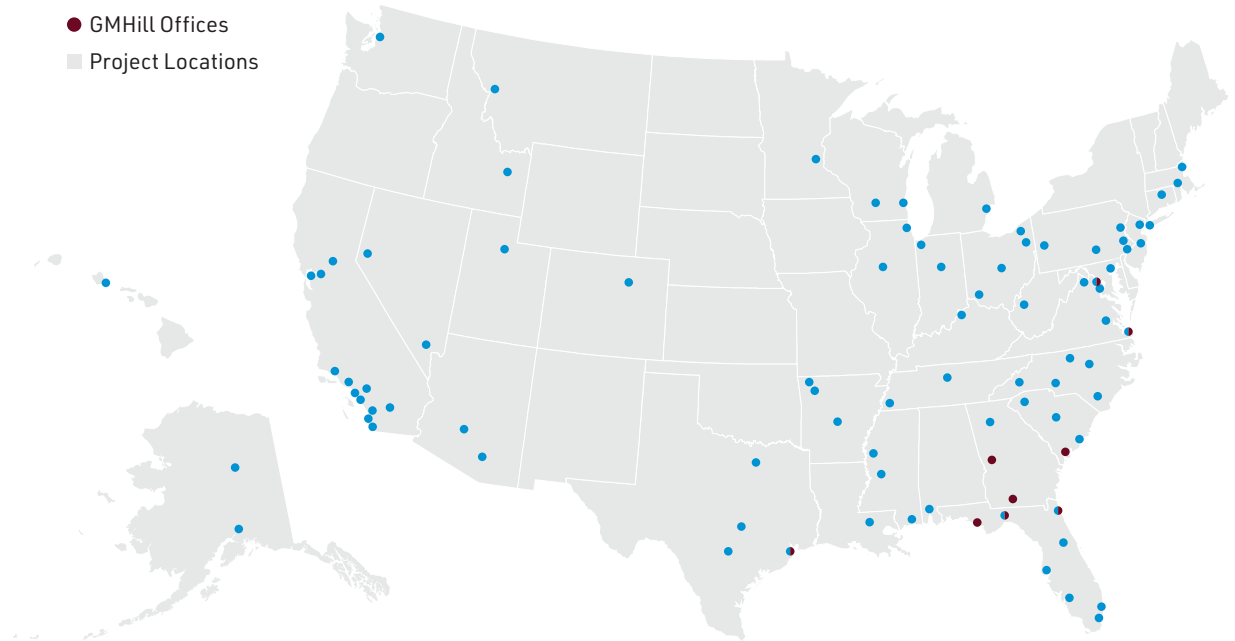


GMHILL BAKER JV, LLC
UEI: W27AFA7JKSW5
CAGE CODE: 983M7

GEOGRAPHIC REACH

With offices across the country, our team can mobilize quickly with local professionals and engage subject matter experts to fulfill the requirements of every project and enhance the communities we serve.

- Michael Baker Offices
- GMHill Offices
- Project Locations



COLLECTIVELY, OUR JV IS PROUD TO HIGHLIGHT

SUCCESSFUL YEARS
OF PARTNERING

7+

PROFESSIONALS
NATIONWIDE

5,000+

OFFICE
LOCATIONS

100+

COMPLETED PROJECTS
AT DISTINCT MILITARY
INSTALLATIONS &
OPERATING LOCATIONS

200+

PROJECT EXPERIENCE

PLANNING ■ ENGINEERING ■ ARCHITECTURE ■ ENVIRONMENTAL ■ COST ESTIMATION

Addition & Renovation for the Military Working Dog Kennel Facility Building 2027

Naval Submarine Base, Georgia

- Architecture and engineering services for addition and renovation to the existing Military Working Dog (MWD) Kennel Facility.
- Includes the design and construction of an approximately 1,500-gross-square-foot MWD unit to house eight kennels, an interior corridor, a mechanical room, and a shared electrical and fire protection room.
- The existing obstacle course area, break area, treatment room, exercise area and obedience course area were adjusted to accommodate the addition.

Joint Simulation Environment Facility

Edwards Air Force Base, California

- Design-build construction of a new two-story, approximately 72,140-gross-square-foot building.
- It will contain two large-volume spaces with flight simulators on the second floor, a freight elevator, an auditorium with stepped seating, office areas and other spaces.
- Most of the building will be provided with SCIF construction.

NAVFAC SE, Small Craft Boat Ramp

Navy Point in Blount Island Command, Jacksonville, Florida

- Completed site preparation for building operations, including limited demolition and removal of existing structures.
- Designed and constructed sheet pile foundation, fill, reinforced concrete slab on grade, asphalt paving from concrete ramp to roadway, underground electrical distribution and two exterior lighting poles.

P-427 Littoral Combat Ship (LCS) Training Facility Engineering and Interior Design Services

Naval Station Mayport, Jacksonville, Florida

- Provided engineering and interior design services for the design-build delivery of a 65,898-square-foot, two-story specialized training facility.
- Facility design combines large bridge simulators, part-task trainers, virtual reality laboratories and administrative functions and complies with UFC 1-200-02 High-Performance and Sustainable Building Requirements.

USACE Mobile, Repair Control Towers at Brown, Stinson and Lucas Stage Field

Fort Novosel, Alabama

- Developed plans and specs for the repair and rehabilitation of control towers that support the rotary wing flight training mission; buildings were improperly sealed, lacked HVAC systems and were deteriorating due to moisture and silt intrusion.
- Conducted field assessments, developed schematic designs and inspected similar operational towers to develop efficient, cost-effective and functional repair and renovation plans.

USACE Mobile, New Construction for Large Boat Maintenance Facility, Bonita Bay

Tyndall Air Force Base, Florida

- Provided services needed for facility damaged in Hurricane Michael along with six other structures under IDIQ Contract.
- Provided DD1391, planning documents, site investigations, engineering evaluations, DB RFPs and construction cost estimates for replacement of facility.



Addition & Renovation for the Military Working Dog Kennel Facility Building 2027, Naval Submarine Base, Georgia



Joint Simulation Environment Facility, Edwards Air Force Base



Bonita Bay Large Boat Maintenance Facility, Tyndall Air Force Base



P-427 Littoral Combat Ship Training Facility, Naval Station Mayport

CONTACT

GMHILL

Gina Hill, P.E.
President, GMHILL
P: 904-280-8244
E: ginahill@gmhillengineering.com

Elizabeth Koski
Vice President, Strategy
P: 630-824-7995
E: elizabeth.koski@gmhillengineering.com

Michael Baker

INTERNATIONAL

John Alberghini, P.E., Cmdr., CEC, USN (Ret.)
National Market Lead, Navy
P: 843-817-2914
E: john.alberghini@mbakerintl.com

Dean Hartman, Col., USAF (Ret.)
National Market Lead, U.S. Air Force & Space Force
P: 210-408-3736
E: dean.hartman@mbakerintl.com

John Hurley, P.E., PMP, Col., USA (Ret.)
National Market Lead, Army
P: 256-599-7791
E: john.hurley@mbakerintl.com

Ben Matthews, P.E., F.SAME
National Market Lead, Federal Civilian Programs
P: 972-256-6178
E: ben.matthews@mbakerintl.com

Josh Rose, P.E., MBA, PMP
National Market Lead, U.S. Air Force & Space Force
P: 858-614-5007
E: josh.rose@mbakerintl.com

COMMITMENT TO EXCELLENCE

GMHILL is a small women-owned (WOSB) business with 19 years of proven history providing clients with a wide range of AE and construction services for design, design-build and design-bid-build projects. The firm has experience across a wide range of project types, such as renovations, additions, and new construction of any scope, scale or budget—all backed by a company-wide commitment to exceeding clients' expectations by delivering cost-effective and efficient projects.

Michael Baker is a leading provider of engineering, development, intelligence and technology solutions with global reach and mobility. With 4,900+ employees in more than 100 office locations, our focus is on the safety and security of people across the world through planning and civil engineering improvements to infrastructure and the environment, and through the protection of our quality of life and freedom in support of national and international security.

CAPABILITIES

Anti-Terrorism &
Force Protection

Architecture &
Engineering Design

Aviation Design &
Management

Building Information Modeling

Coastal Engineering

Construction Management

Cost Estimation & Management

Cybersecurity for Facility
Related Systems

Design-Build & Alternative
Project Delivery Methods

Emergency Response

Energy Management

Environmental Consulting

Facility Assessments
& Inspections

Geospatial Information
Technology

Military Master Planning

National Environmental
Policy Act Compliance

Program Management

Resiliency Planning & Consulting

Site Development

Site Utility Assessment

Structural

Survey, Mapping & LiDAR

Sustainability Consulting

Unmanned Aerial Systems
Inspection Services

Water Resource Management

Water & Wastewater Engineering