

# Excellence in Highway Services

Michael Baker International has been helping to shape America's roadways for more than 85 years, providing comprehensive services from conceptual and preliminary engineering studies through final design and construction.

We offer a strong local presence that is well versed in project management, quality assurance, rural and urban roadway design, construction staging and traffic control, drainage design, traffic design, public involvement and environmental documentation. We also utilize national resources, as necessary, to take on the toughest challenges.

## Complete Streets and Active Transportation

Our team members have worked with agency staff to refine typical roadway standards, successfully manage right-of-way constraints and balance stakeholder issues, while developing multimodal treatments to improve safety, accessibility and livability. We use the latest visualization and communication technologies to convey information and produce successful projects that have public support.



I-494 Airport to Highway 169 Project 1, Design-Build (In Construction)  
Hennepin County, Minnesota

Photo courtesy of C.S. McCrossan

**Michael Baker**  
INTERNATIONAL

*We Make a Difference*

## SERVICES

- Americans with Disability Act (ADA) Evaluation & Design
- Certified 3D Model Delivery
- Complex Interchange Design & Traffic Modeling
- Drainage Design & Hydraulic Modeling
- Environmental Documentation
- Maintenance of Traffic Design
- Planning & Feasibilities Studies
- Preliminary & Final Design
- Public Engagement
- Roundabout & Alternative Intersection Design
- Traffic Engineering Design
- Traffic Studies & ICE Reports
- Value Engineering
- Unmanned Aircraft Systems (UAS) Photography & Inspection

## CONTACT

Jon Schelkoph, P.E.  
Office Executive, Minneapolis  
P: 651-366-2732  
E: [jon.schelkoph@mbakerintl.com](mailto:jon.schelkoph@mbakerintl.com)

Kristy Morter, P.E.  
Department Manager, Highway  
P: 612-851-3831  
E: [kristy.morter@mbakerintl.com](mailto:kristy.morter@mbakerintl.com)

Visit [mbakerintl.com/highway](http://mbakerintl.com/highway) to learn more about our capabilities and iconic projects.

# WE ARE PROUD TO HELP SHAPE MINNESOTA'S ROADWAY INFRASTRUCTURE

## Connect With Our Key Highway Department Personnel



Jon Schelkoph, P.E.  
Office Executive, Minneapolis  
P: 651-366-2732  
E: jon.schelkoph@mbakerintl.com



Kristy Morter, P.E.  
Department Manager, Highway  
P: 612-851-3831  
E: kristy.morter@mbakerintl.com



Kelly Kostecki, P.E.  
Highway Project Manager  
P: 763-445-9894  
E: kelly.kostecki@mbakerintl.com



Trevor Lachance, P.E.  
Highway Engineer/Technical Manager  
P: 651-246-0469  
E: trevor.lachance@mbakerintl.com



Jordan Jessen, P.E.  
Senior Water Resources Engineer  
P: 507-226-2817  
E: jordan.jessen@mbakerintl.com



Sajid Raza, Ph.D., P.E.  
Traffic Engineer  
P: 612-851-3836  
E: sajid.raza@mbakerintl.com



Eric Hanson, PWS, CMWP  
Senior Environmental Planner  
P: 612-851-3845  
E: eric.hanson@mbakerintl.com



Daniel Rokenbrodt, P.E.  
Senior Highway Engineer  
P: 612-851-3826  
E: daniel.rokenbrodt@mbakerintl.com

*We Make a Difference*

## FEATURED HIGHWAY PROJECTS



197th Avenue Rendering

### 169 Redefine - Elk River

**Owner:** Minnesota Department of Transportation  
**Location:** Elk River, Minnesota  
**Role:** Roadway & Interchange Design, Bridge Design & ITS Design  
**Project Cost:** \$130 million



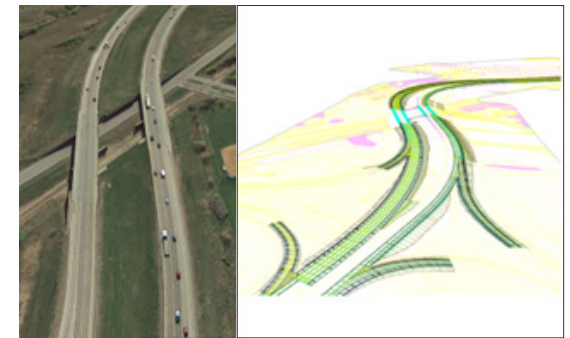
### I-494 Airport to Highway 169 Project 1, Design-Build

**Owner:** Minnesota Department of Transportation  
**Contractor:** C.S. McCrossan  
**Location:** Hennepin County, Minnesota  
**Scope:** Lead Designer  
**Estimated Completion:** 2026  
**Estimated Construction Cost:** \$377 million



### Route U.S. 169 Safety Audit

**Owner:** Minnesota Department of Transportation  
**Location:** Sherburne County, Minnesota  
**Role:** Road Safety Audit (RSA) for a 15-mile Segment of U.S. 169, from Elk River to Princeton  
**Deliverable:** RSA Report with Key Findings and Recommended Safety Improvements



### I-94 Gap - Monticello to Albertville

**Owner:** Minnesota Department of Transportation  
**Location:** Monticello to Albertville, Minnesota  
**Role:** Preliminary Design (Level 1 Layout) & Striping Plans  
**Estimated Construction Cost:** \$100 million