

# Michael Baker INTERNATIONAL

## Mitigation, Environmental, Response, Recovery & Resiliency (MER3)

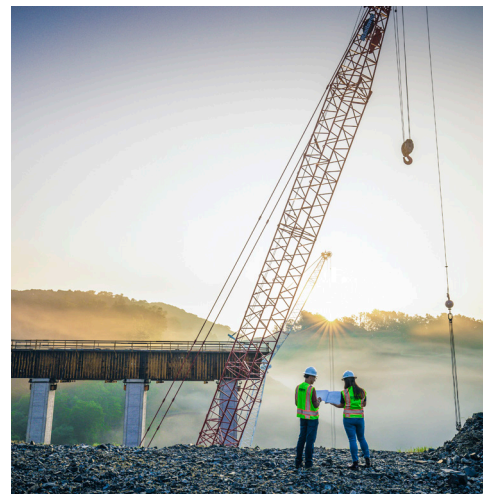
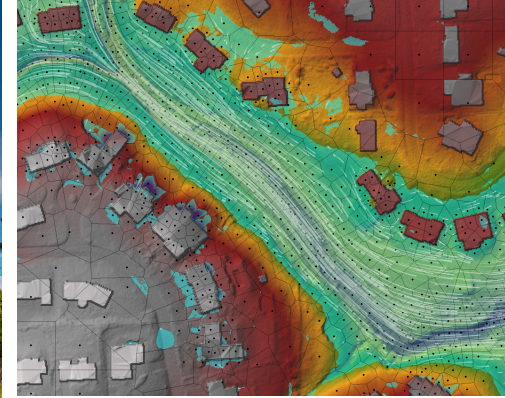
Clients need a partner that can connect planning, funding, design, operations and delivery across the full resilience life cycle.

The MER3 business vertical unites Michael Baker International, Tidal Basin Group and MLU Services as one integrated team providing end-to-end solutions. Together, we deliver engineering, emergency management, grants and compliance, technology, logistics, temporary housing and field operations.

The result is one partner that moves seamlessly from strategy to execution to speed recovery and build long-term resilience.

PLAN + FUND + DESIGN +  
DELIVER + OPERATE + RECOVER

*We Make a Difference*



## WHY CLIENTS CHOOSE US

MER3 brings planning, funding, design, technology and field delivery together in one team.

- One partner across the full resilience life cycle.
- Rapid, scalable response & recovery support.
- Technology-enabled delivery & visibility.
- Proven performance in complex funded programs.

### Capabilities

- **Emergency Management** – preparedness, response, recovery & continuity support.
- **Risk & Resilience** – mitigation planning, risk assessments, hydrologic & hydraulic engineering, coastal resilience & risk communication.
- **Funding & Compliance** – grants, case management & compliance.
- **Design & Build** – engineering, permitting & construction support.
- **Contingency Operations & Logistics** – housing, logistics & field operations.
- **Technology & Engagement** – GovTech, geospatial solutions, contact centers & reporting.

## CONTACT

Catherine Carr Clinch, CFM  
President, MER3  
P: 888-282-1626  
E: catherine.clinch@tidalbasingroup.com



**Michael Baker**  
INTERNATIONAL

## FEATURED PROJECTS



### Florida Department of Transportation State Highway System Resilience Action Plan

Statewide Florida

- Performed vulnerability assessments & resilience strategy development.
- Supported stakeholder & public engagement.
- Delivered plan development & technical documentation to guide statewide action.



### California Department of Resources Recycling and Recovery Inland Fire Wildfire Recovery

Napa, Sonoma, Mendocino, Lake, Solano, Yuba and Yolo Counties

- Delivered civil engineering & environmental services.
- Applied geographic information systems to improve visibility & coordination.
- Supported emergency response & resilience-focused recovery activities.



### Florida Division of Emergency Management Starlink Deployments

Statewide Florida

- Delivered high-speed, low-latency internet access to government agencies, first responders, essential businesses and the public.
- Deployed communications following five major hurricanes.



### FEMA LogHOUSE - Iowa Flooding

Hawarden, Spencer and Rock Valley, Iowa

- Developed three temporary housing sites with 76 manufactured housing units.
- Provided site selection, surveys & planning, design/engineering & permitting.
- Connected planning & design with housing mission execution.



### Hawaii Emergency Management Agency/ Maui Emergency Management Agency

Maui, Hawaii

- Supported survivor intake online, in person & through contact center operations.
- Conducted eligibility & case review & property data validation.
- Enabled coordinated communications & real-time reporting to support decision-making.